

NORTH CAROLINA MUSEUM OF ART

Visiting East Building

A Suggested Visual Schedule



Image description: A large paved pathway lined with trees leads to East Building, a multistory, tan, brick building.



**North Carolina
Museum of Art**



Photo: Max Pulley

Image description: East Building's entrance consists of three sets of black glass doors. The door on the far right is automatic with a button positioned next to the door at waist level.

1. Let's enter East Building. East Building has three levels to explore, each with unique galleries and special exhibitions.



Photo: Max Pulley

Image description: Three people are positioned behind the Tickets/Information Desk. Two people sit behind computer screens, while the third person stands.

2. If you would like to borrow noise-canceling headphones, get earbuds, grab a map, or ask any questions related to the Museum or accessibility, visit the Tickets/Information Desk, located to the left when you enter the main entrance.



Photo: Max Pulley

Image description: A golden elevator on the main floor of East Building is located down a short hallway with gallery walls on either side.

3. Use the elevator to navigate between the three levels: A, B, and C. You can also take the stairs, which are past the Tickets/Information Desk. Each level has different offerings. Level A includes a variety of galleries with artworks from our permanent collection. Level B features special exhibitions, which are ticketed. Level C includes the East Café and a “Stay and Play” area. Which level would you like to visit first?



Photo: Max Pulley

Image description: The main floor of East Building includes multiple galleries featuring modern and contemporary artworks. A black, wooden sculpture dominates the center of the space and extends toward the ceiling.

4. On Level A, the main floor, there are two major gallery spaces, “Portraits and Power” and “Global Contemporary,” as well as the Education Gallery, which showcases exhibitions by educators and students. There are places to sit and relax throughout these spaces. Which artworks are your favorites and why?



Image description: A large mixed-media painting of three Black women dressed in 1970s-inspired clothing. They stand next to one another in various poses that emulate the “Three Graces” from classical antiquity. The surface is fragmented; geometric, neon lines break the image into irregular shapes similar to broken glass.

5. Find Mickalene Thomas’s *Three Graces: Les Trois Femmes Noires* in the “Portraits and Power” gallery. Notice all the various colors and textures. What stands out to you? Complete the *Three Graces* coloring page.

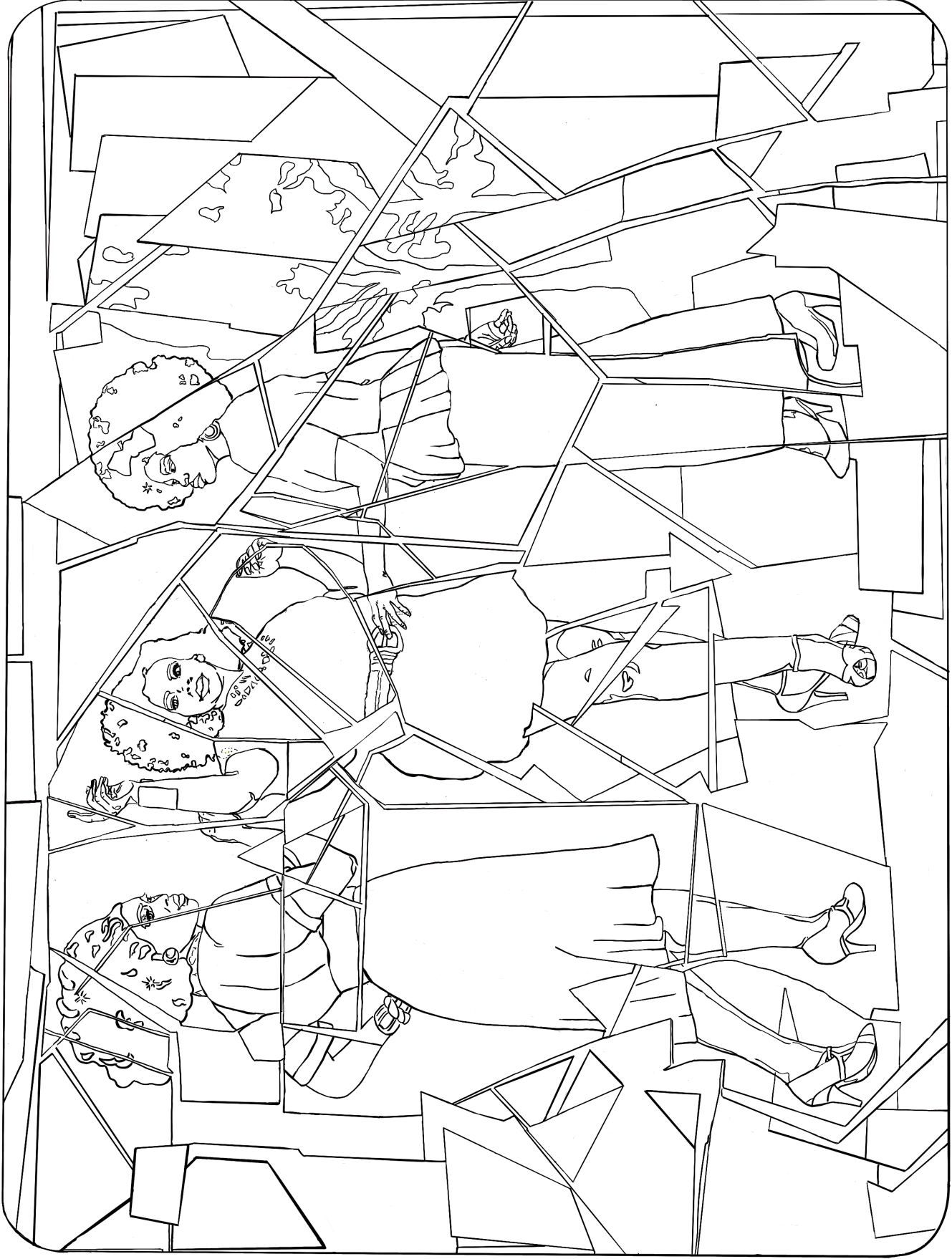


Image description: A coloring page of Mickalene Thomas's *Three Graces: Les Trois Femmes Noires*



Image description: From the steps that lead down to Level B, there is a view of the open floor plan. It includes three gallery spaces and the current video installation in the middle.

6. On Level B you can find the photo and video galleries, Gallery 1 (Meymandi Exhibition Gallery), Gallery 2 (Pope Gallery), and Gallery 3. Can you find the video installation? What do you enjoy about it?



Photo: Max Pulley

Image description: The themed Exhibition Store on Level B includes exhibition-related merchandise displayed on the wall, shelves, and tables. A person stands behind the sales desk as people are shopping.

7. Also on Level B, you can find the Exhibition Store. This store changes themes according to the special exhibition.



Photo: Max Pulley

Image description: On the far right of the “Stay and Play” area is a sign that points to exhibitions, the café, restrooms, and the family lounge. In the middle and left of the space are multiple activities, tables, and chairs for children and their caregivers.

8. On Level C you can find the East Café and the “Stay and Play” area with interactive activities. In “Stay and Play,” there are multiple opportunities to engage the senses and learn. Find the Hieroglyphs Spelling station. How is your name spelled in Egyptian hieroglyphs? Note: this area can occasionally have an elevated noise level.



Image description: A large paved pathway lined with trees leads to East Building, a multistory, tan, brick building.

9. Now you've explored East Building. What does it look like to you? Complete the East Building coloring page.

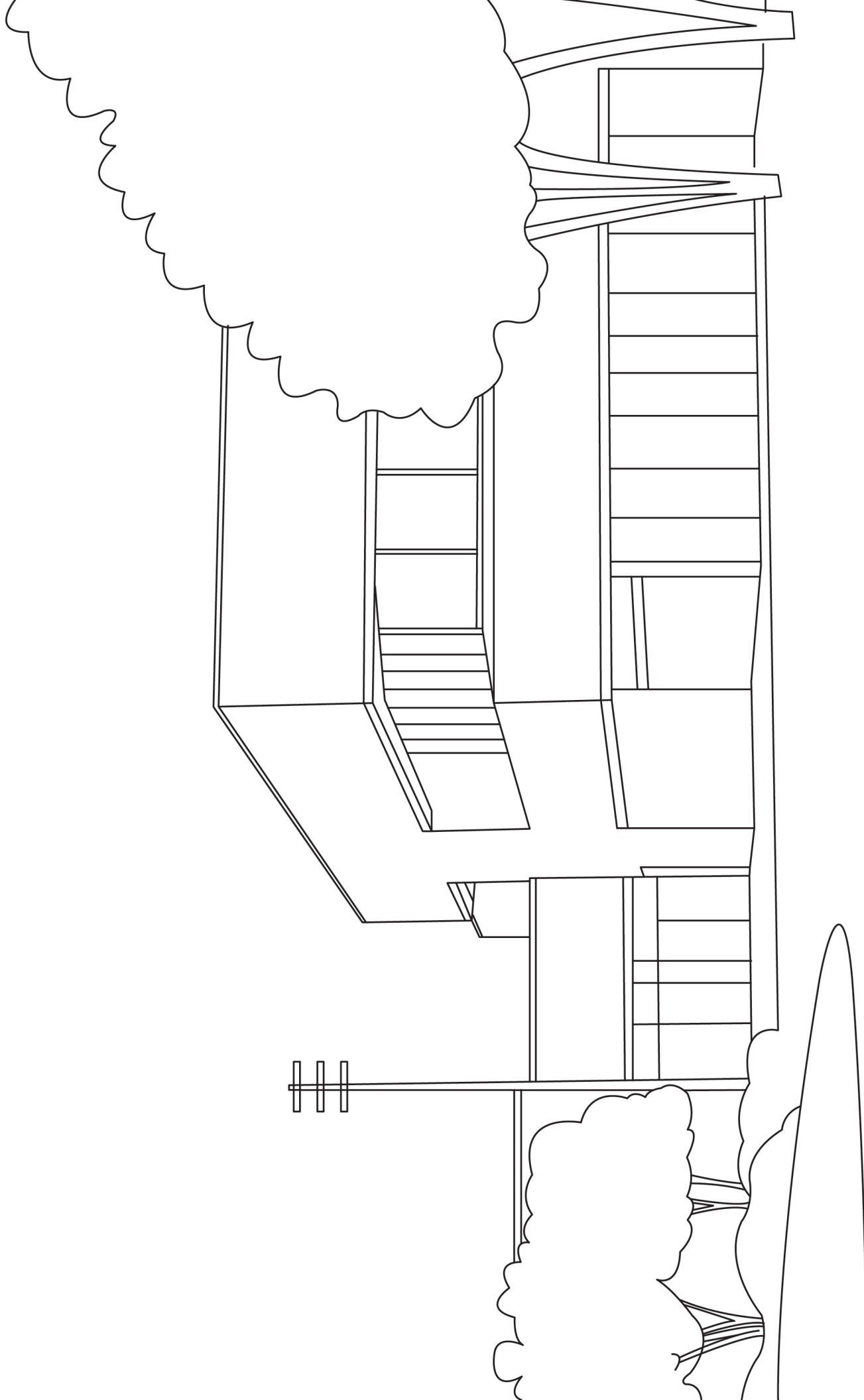


Image description: Image description: A coloring page of East building and the surrounding area.