

NEWS RELEASE

STREET 2110 Blue Ridge Road Raleigh, NC 27607-6494
MAIL 4630 Mail Service Center Raleigh, NC 27699-4630
TEL 919.839.6262 FAX 919.733.8034 WEB ncartmuseum.org



For Immediate Release

August 25, 2011

Media Contact:

Jennifer Warner: (919) 664-6772, jwarner@ncartmuseum.org

Important Rodin Sculptures Coming to the N.C. Museum of Art

Loan of ten works from personal collection of Iris Cantor to complement Museum's existing Rodin collection

RALEIGH, N.C.—Fast becoming one of the nation's premier destinations for Rodin sculpture, the North Carolina Museum of Art will install 10 additional sculptures by the celebrated French artist in the Museum's West Building. On loan from Iris Cantor's private collection, the sculptures will go on display September 2 alongside other works by Rodin in the Museum's collection. Two of the works will be installed outdoors in the Rodin Garden and eight will be on view in the Rodin Court.

David Steel, NCMA curator of European Art, who selected the loans, notes that the ten "represent some of Rodin's most important and beautiful works," and that they enhance and complement the 30 bronzes given to the Museum by the Cantor Foundation that were installed in the West Building on the occasion of the new building's grand opening in April 2010.



"We are extremely grateful to Mrs. Cantor for continuing to share her world-renowned collection of Rodin with this Museum and the people of North Carolina," said Lawrence J. Wheeler, director of the North Carolina Museum of Art. "Her generosity has placed the North Carolina Museum of Art among the best collections of Rodin sculpture in the United States."

In making the loans, Iris Cantor, who during the years 1946-1996 with her late husband B. Gerald Cantor amassed the largest Rodin collection in private hands, acknowledged the continuing interest in making Rodin's transformational sculpture available for the public to see.

Many of the treasures lent by Cantor directly relate to works already in the Museum's Rodin collection. A rare marble sculpture of *Eve* and a monumental sized bronze of *Eve*, standing 68 inches tall, will join the Museum's smaller *Eve*. The Cantor-owned *Final Study for the Monument to Balzac* complements the two studies for the same

commission on view, and the *Monumental Torso of the Falling Man* will be installed near the NCMA's *The Falling Man* and *I Am Beautiful (Je suis belle)*.

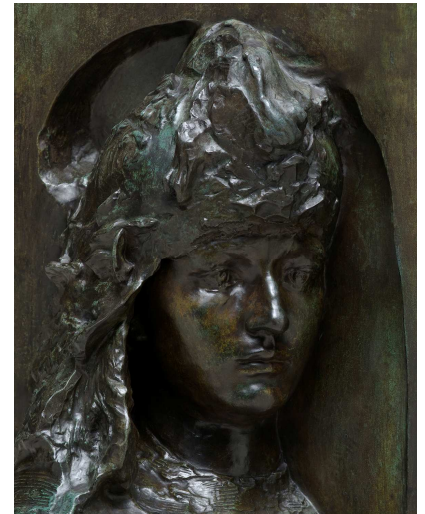
Three of Rodin's monumental *Burghers of Calais*—*Eustache de St. Pierre, Vêtu*, *Jean d'Aire Nude*, and *Pierre de Wissant, Vêtu*—will join the two large *Burghers* (one of them lent by Cantor) already on view, offering visitors a unique opportunity to see life-size versions of five of the six individual figures that comprise Rodin's famous monument..

The remaining works on loan include *Walking Man*, a "descendant" of the Museum's Egyptian *Striding Figure*; *Torso of the Walking Man*; and *La France*, Rodin's portrait of his lover Camille Claudel, to be installed near the Museum's bust of Rodin created by Claudel.

The majority of the works will be on view at the Museum for a minimum of two years; the marble *Eve* and the *Final Study for the Monument to Balzac* have been promised for at least six months.

The exhibition of these ten works was made possible by First Citizens Bank.

The Museum is home to the largest collection of Rodin sculpture in the American South. Visitors can see the works for free among the Museum's permanent collection in West Building.



Images:

Auguste Rodin, *La France*, detail, modeled circa 1904, this example cast at a later date, bronze, H. 23 1/2 x W. 21 1/2 x D. 12 in., On loan to the North Carolina Museum of Art from Iris and B. Gerald Cantor

Auguste Rodin, *Pierre de Wissant, Vêtu*, modeled 1887, Musée Rodin cast 1983, bronze, H. 81 x W. 40 x D. 48 in., On loan to the North Carolina Museum of Art from Iris and B. Gerald Cantor

Additional images available upon request.

###

The North Carolina Museum of Art's permanent collection spans more than 5,000 years, from ancient Egypt to the present, making the institution one of the premier art museums in the Southeast. The Museum's collection provides educational, aesthetic, intellectual, and cultural experiences for the citizens of North Carolina and beyond. The 164-acre Museum Park showcases the connection between art and nature through site-specific works of environmental art. The Museum offers changing national touring exhibitions, classes, lectures, family activities, films, and concerts.

The Museum recently opened its new gallery building, home to the permanent collection. The North Carolina Museum of Art, Lawrence J. Wheeler, director, is located at 2110 Blue Ridge Road in Raleigh. It is the art museum of the State of North Carolina, Beverly Eaves Perdue, governor, and an agency of the Department of Cultural Resources, Linda A. Carlisle, secretary. Admission to the Museum's permanent collection and Museum Park is free. Museum hours are Tuesday–Thursday and Saturday–Sunday, 10 a.m.–5 p.m.; Friday, 10 a.m.–9 p.m.; Closed Monday. For more information about the Museum, visit www.ncartmuseum.org.